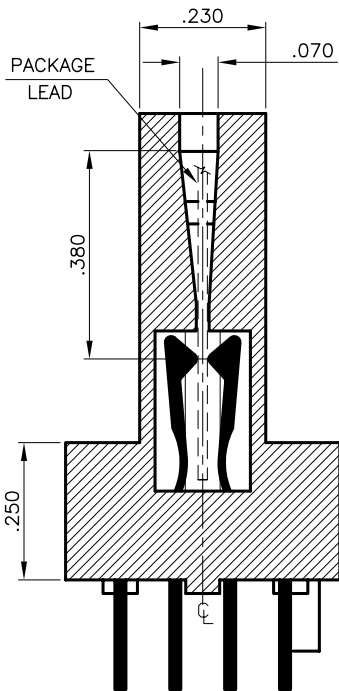


**FOOTPRINT**

(SOCKET SIDE OF BOARD)



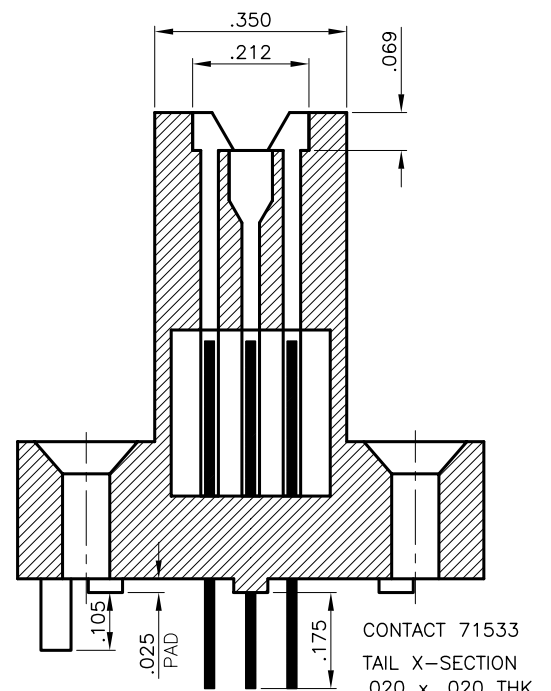
**SECTION A-A**

**SPECIFICATIONS:**

- INSULATOR: PES (POLYETHERSULFONE).
- CONTACT: BeCu., SPRING TEMPERED  
30u GOLD OVER 30u NICKEL.
- THERMAL RANGE: -55°C/+175°C.

**FEATURES:**

- REPAIRABLE
- KELVIN CONTACTS
- PIN #1 INDENTIFIER/ KEYED MOUNTING
- CONTACT TAILS, MOUNTING HOLES AND DEVICE LEADS STRADDLE  $\phi$  OF SOCKET.
- NEST ALLOWS HALF OF PACKAGE BODY HEIGHT EXPOSURE ABOVE SOCKET TOP.
- ALIGNMENT POST (2) EASILY REMOVED BELOW FEET.
- COUNTERSINK ON TOP FOR REPEATABLE REGISTRATION.



**SECTION B-B**