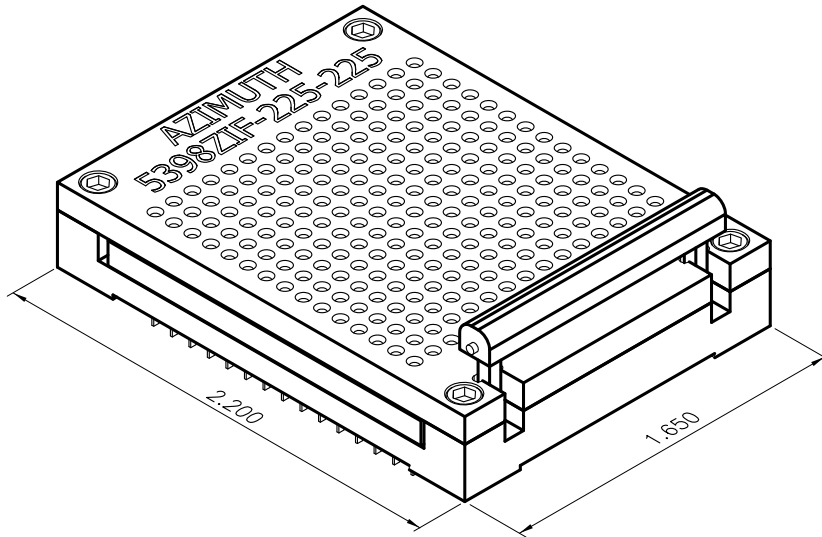




TEST SOCKET FOR
.100 c/c x 225 LEADS
5398ZIF-225-225

05/08

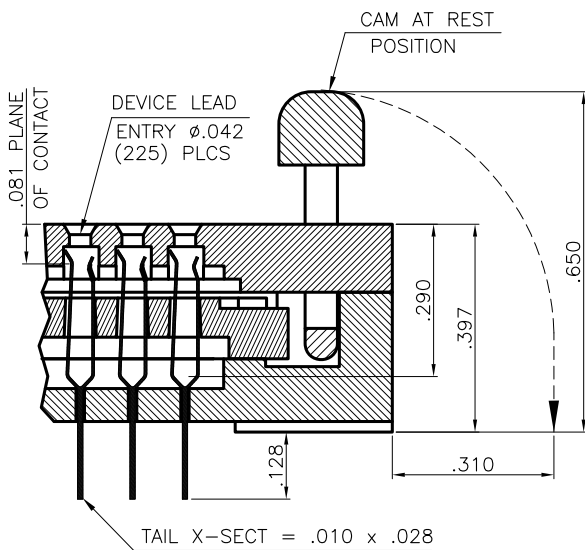


SPECIFICATIONS:

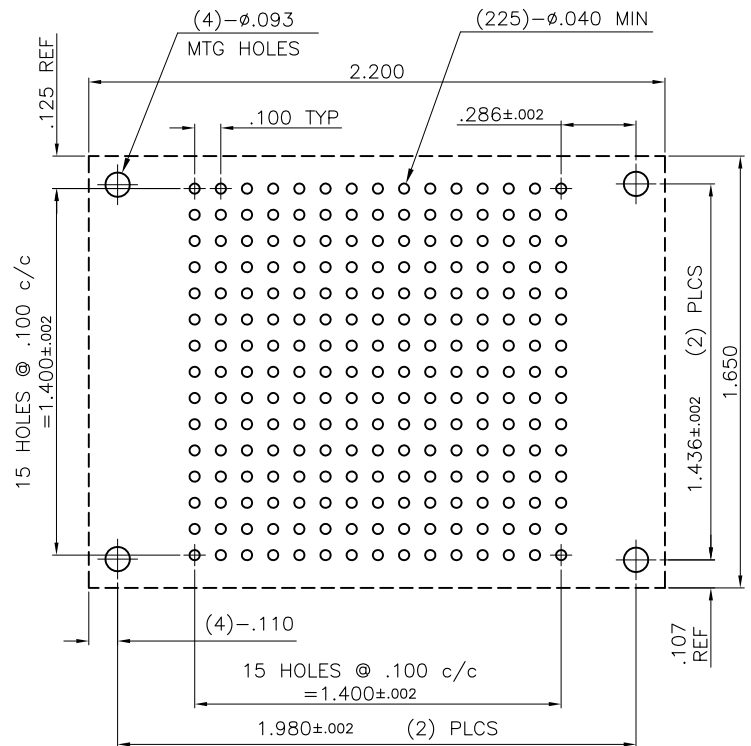
- INSULATOR: POLYETHERIMIDE (PEI)
- CONTACT: BeCu., SPRING TEMPERED
30u GOLD OVER 30u NICKEL.

FEATURES:

- ZERO INSERTION FORCE
- EFFICIENT CAM ACTUATION
- SMALL SIZE
- REPAIRABLE



SECTION THRU CONTACT
(TEST POSITION)



FOOTPRINT
(SOCKET SIDE OF BOARD)